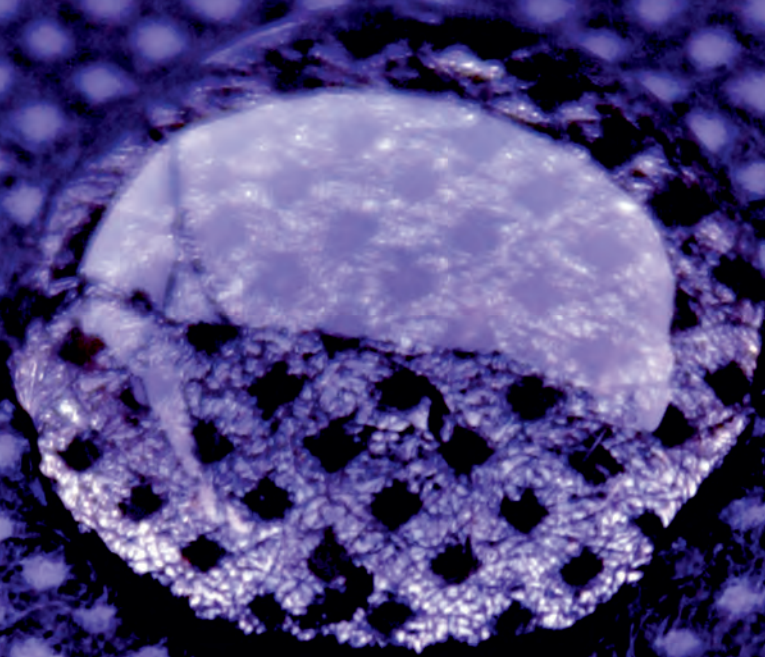




nanolex

## How to apply



Premium Textile Sealant for Convertible Tops

## How To Use Nanolex Nanolex Premium Textile Sealant for Convertible Tops

**This product can be stored for up to 24 months (in a dry, temperature stable environment)**

### **Consumption:**

Sealant: appr. 40-50ml/m<sup>2</sup> (~150 ml for one soft top)

**Processing temperature:** 5-30°C - Avoid direct sunlight and/or high air humidity.

IMPORTANT: Before you use a Nanolex Car Care product please make sure you wear suitable protection gear – we always recommend to use Latex- or Nitril gloves to make sure your hands are protected from any possible damage to your skin.

### **1. Cleaning**

Before applying Nanolex Premium Textile Sealant for Convertible Tops make sure that the fabric is as clean as possible, most importantly make sure that there is no residue of any cleaners on/in the fabric, those will prevent the necessary bonding.

### **2. Application of Nanolex Premium Textile Sealant for Convertible Tops**

Spray Nanolex Premium Textile Sealant for Convertible Tops onto the fabric, spreading it evenly until the surface is completely saturated.

### **3. Curing period**

Let the sealant dry for at least 24h before the first water contact. The sealant dries and cures at room temperature. Avoid drying at higher temperatures because of possible forming of explosive mixings with air.

Caution: If the product is sprayed on the fabric wearing of inhalation protection is necessary due to aerosol forming. Be sure of efficient exhaust.

If you have any questions regarding our products or in case you need support during the application please feel free to get in touch with our staff any time.

The information on this data sheet is based on the current status of technical development as well as our experience with the product. However, given the variety of surfaces and ambient conditions, the information provided on this data sheet shall in no way diminish the responsibility of the user to ensure with due care, that our product is suited for the intended purpose, surface and application conditions.

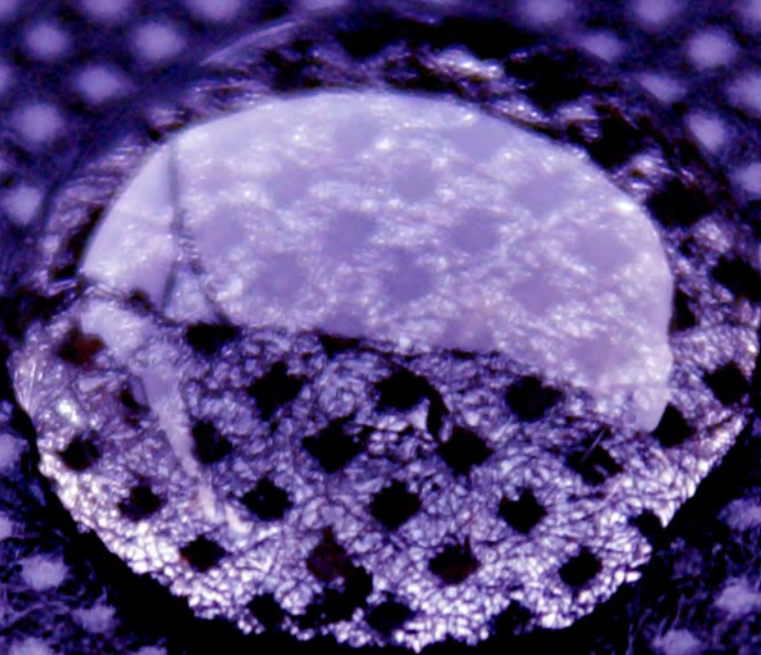
Since application and processing lie outside our purview, no manufacturer liability shall be derived from the information provided herein. Our General Terms and Conditions of business shall apply in all cases. All information is subject to change without notice.

Contact:

<b>Nano Surface Solutions</b>	Phone:	00496803984057
NANOLEX CAR CARE	Fax:	004968038647
Am Liedersberg 17a	E-mail:	info@nanolex.de
66399 Mandelbachtal		
<b>Germany</b>		



nanolex



[www.nanolex.de](http://www.nanolex.de)